

# ECOM297ST

C250 (Group 3)

## Composite Access Cover

**ECOM297ST 450x450x40**

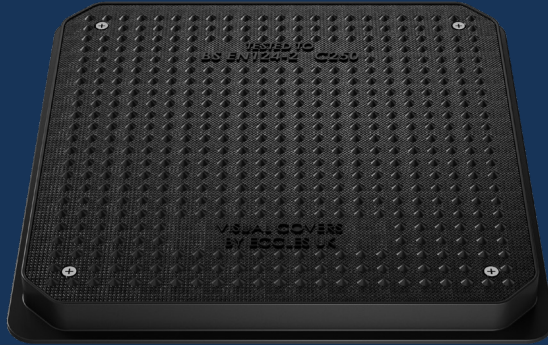


Composite access cover, suitable for use in areas where not extending more than 500mm from the kerb face into carriageway. Capable of withstanding a 250kN (25 tonnes) test load.

**VisualCovers**<sup>™</sup>

### OPTIONAL EXTRAS

- Rubber seal
- Badged



<b>PRODUCT CODE</b>	ECOM297ST	<b>BASE SIZE</b>	530mm x 530mm
<b>CLEAR OPENING</b>	450mm x 450mm	<b>DEPTH</b>	40mm

### FEATURES

- LOCKED**  
Locked for increased general security of the cover in the frame.
- COATING**  
Black coated finish
- SINGLE SEAL**  
Designed and engineered for an easy seal, when packed with grease it provides an airtight seal.
- COMPETITIVE**  
Competitively priced against legacy materials used for the equivalent application.
- ANTI-FATIGUE**  
Our extensively designed and developed top pattern matrix provides a high wearability. Ideal for areas with high pedestrian footfall.
- LOW VIBRATION RATE**  
Our unique composition of material allows for minimal to no vibrations. Ensuring the supporting area and structures are unaffected by the trafficking of the cover.
- HIGH UV RESISTANCE**  
The unique composition of the eco cover range provides a high UV resistance value, ensuring the product maintain a high level of aesthetics.
- SILENT ENGINEERING**  
Significantly reduced noise in service in comparison to conventional materials user for similar applications.
- RECYCLABLE**  
Long life asset with high circularity contributing to the reduction in carbon footprint.
- EASY FIT**  
Designed and manufactured for ease of installation and maintenance.
- LIFESPAN**  
Our unique SMC material has been researched and designed to ensure a long lifespan. Utilising some of the most innovative techniques to increase the ECO covers wearability and lifespan.
- LIGHTWEIGHT**  
30 to 40% lighter than materials used for the same application.
- SMARTGRIP TECHNOLOGY™**  
Unique pattern design provides a PSRV value of >70 (UKAS Accredited 3rd Party).

# ECOM297ST

C250 (Group 3)

## Composite Access Cover

ECOM297ST 450x450x40



Composite access cover, suitable for use in areas where not extending more than 500mm from the kerb face into carriageway. Capable of withstanding a 250kN (25 tonnes) test load.

VisualCovers™

### DATA

#### Dimensions

A / Base Size: 530mm x 530mm

B / Clear Opening: 450mm x 450mm

C / Depth: 40mm

#### Materials

Composite

#### Finish

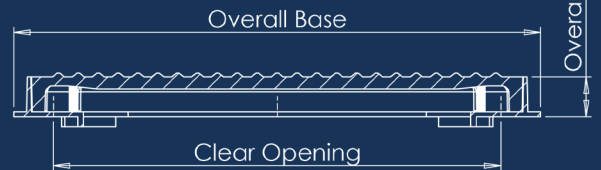
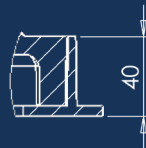
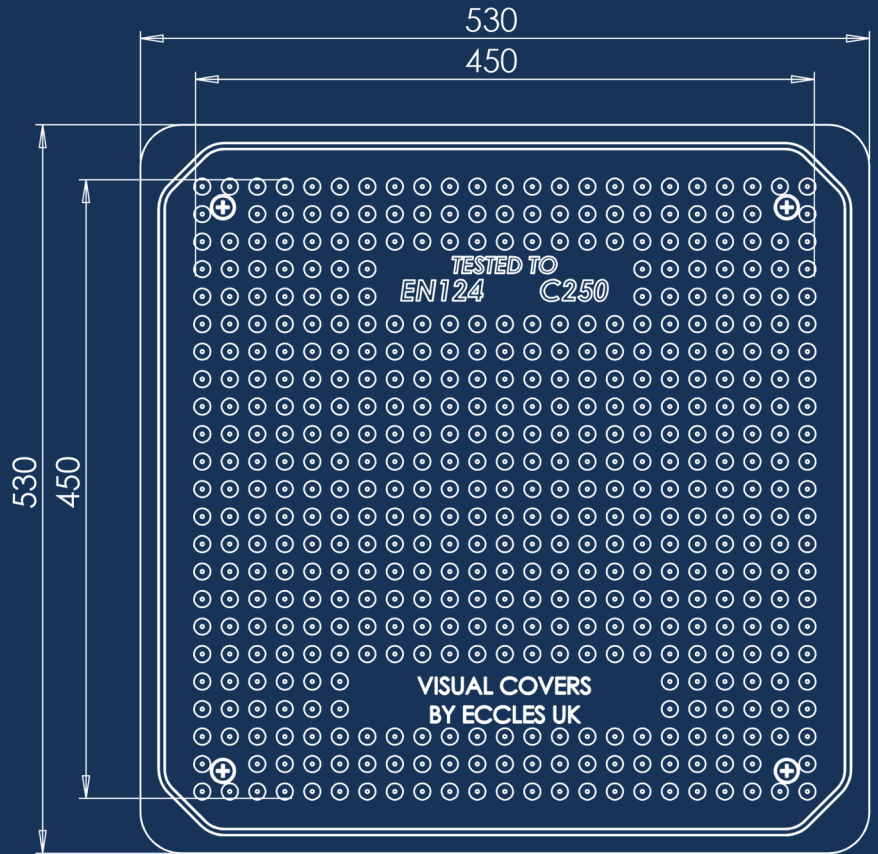
MicroTextured

#### Standard

Tested to EN124

#### Product Type

Composite Access Cover



SmartGrip™  
Technology

Disclaimer: Eccles (UK Foundries FE) Ltd are continually seeking to improve our products and we therefore reserve the right to alter product specifications without prior notice. It is the responsibility of all users to ensure that the above product data is current. Installation details are available on request. It is always recommended that the use of road plates be used where access covers, gully grates and frames are exposed to construction and site traffic during the construction phase of any project and in accordance with "Annex F" EN124-1:2015.

### DIAGRAM KEY

- A** BASE SIZE
- B** CLEAR OPENING
- C** FRAME DEPTH

**eccles**®  
Intelligent Access & Drainage Solutions™

+44 (0)1922 613 222  
enquiries@ecclesproducts.com  
[www.ecclesproducts.com](http://www.ecclesproducts.com)

Eccles (UK Foundries FE) Limited  
Portland Street, Walsall,  
West Midlands, WS2 8AA, UK

