

# SB001

Grade A

## Ductile Iron Surface Box

**SB001 150x150x100**

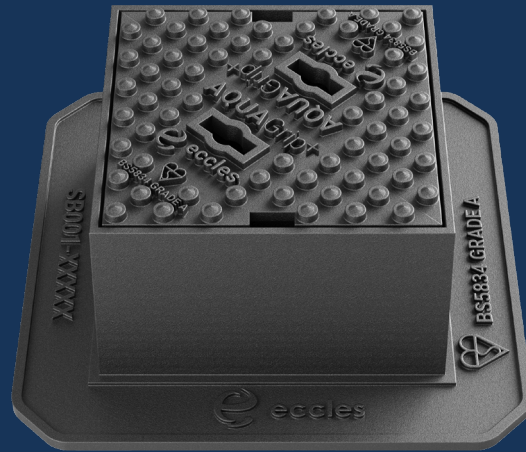


Capable of being used in carriageways and other areas carrying fast moving, normal commercial vehicles with wheel loads up to 5 tonnes and slow moving, specially authorised vehicles with wheel loads up to 11.5 tonnes.

**AquaGrip<sup>+</sup>**

### OPTIONAL EXTRAS

- **Badged**



<b>PRODUCT CODE</b>	SB001	<b>BASE SIZE</b>	222mm x 222mm
<b>CLEAR OPENING</b>	150mm x 150mm	<b>DEPTH</b>	100mm

### FEATURES

- SMARTGRIP TECHNOLOGY™**  
Unique pattern design provides a PSRV value of >70 (UKAS Accredited 3rd Party).
- KITEMARK**  
Exceeds the requirements of BS 5834, tested and certified by BSI.
- WEDGE SEATED**  
The cover features our centring wedge seating and indexes which ensures the cover is always fitted correctly.
- RATIO**  
Ductile iron for improved weight to strength ratio.
- COATING**  
Black coated finish.
- STRONG & DURABLE**  
Spheroidal graphite cast iron according to EN 1563:2018.
- RECYCLABLE**  
Long life asset with high circularity contributing to the reduction in carbon footprint.

# SB001

Grade A

## Ductile Iron Surface Box

SB001 150x150x100



Capable of being used in carriageways and other areas carrying fast moving, normal commercial vehicles with wheel loads up to 5 tonnes and slow moving, specially authorised vehicles with wheel loads up to 11.5 tonnes.

**AquaGrip+**<sup>™</sup>

### DATA

#### Dimensions

A / Base Size: 222mm x 222mm

B / Clear Opening: 150mm x 150mm

C / Depth: 100mm

#### Materials

Ductile Iron

#### Finish

Black Coated

#### Certification

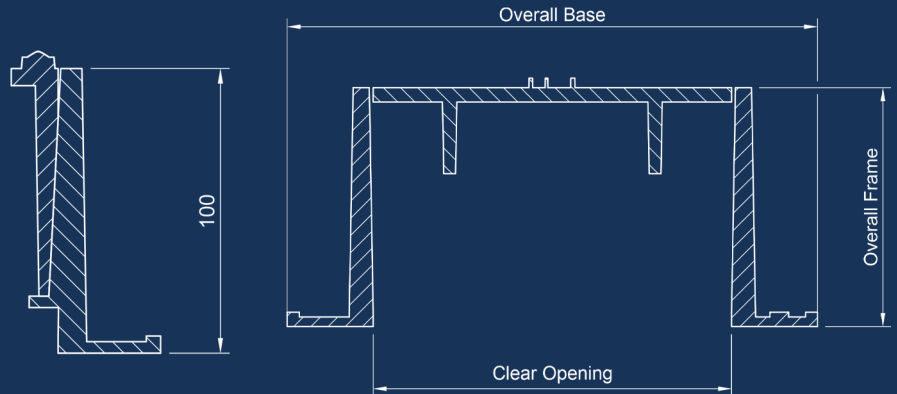
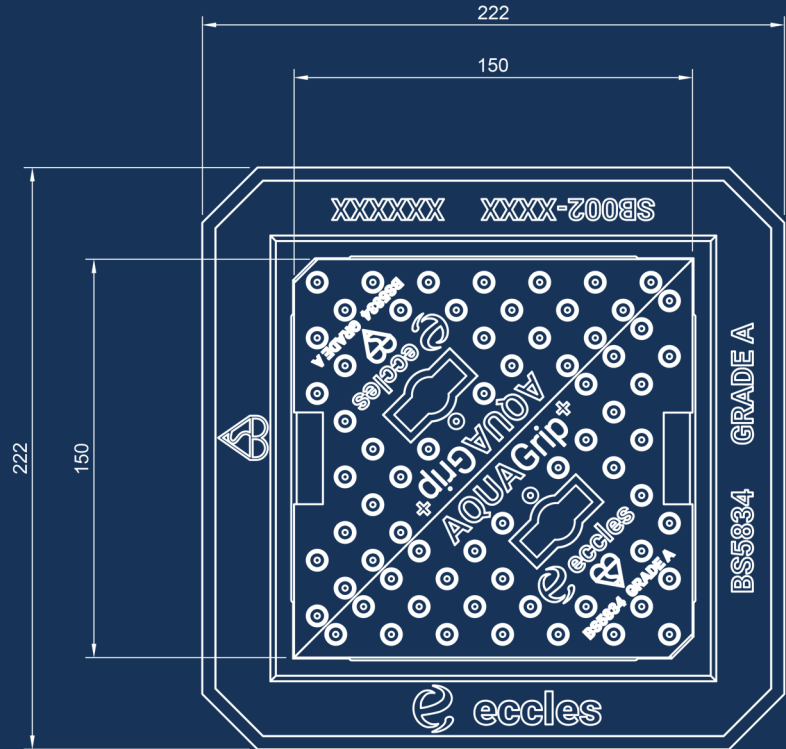
BSI Kitemark

#### Standard

BS 5834

#### Product Type

Ductile Iron Surface Box



**SmartGrip**<sup>™</sup>  
Technology

Disclaimer: Eccles (UK Foundries FE) Ltd are continually seeking to improve our products and we therefore reserve the right to alter product specifications without prior notice. It is the responsibility of all users to ensure that the above product data is current. Installation details are available on request. It is always recommended that the use of road plates be used where access covers, gully grates and frames are exposed to construction and site traffic during the construction phase of any project and in accordance with "Annex F" EN124-1:2015.

#### DIAGRAM KEY

- A** BASE SIZE
- B** CLEAR OPENING
- C** FRAME DEPTH

**eccles**<sup>®</sup>  
Intelligent Access & Drainage Solutions<sup>™</sup>

+44 (0)1922 613 222  
enquiries@ecclesproducts.com  
[www.ecclesproducts.com](http://www.ecclesproducts.com)

Eccles (UK Foundries FE) Limited  
Portland Street, Walsall,  
West Midlands, WS2 8AA, UK

