

DU143ME

D400 (Group 4)

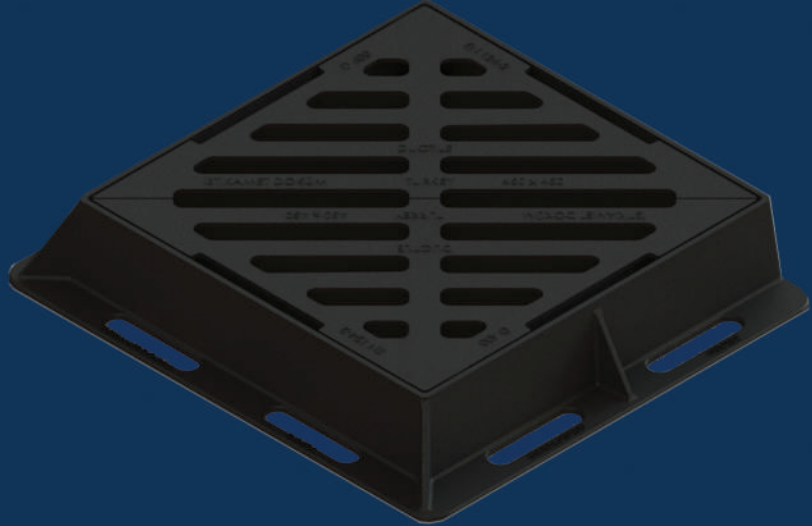
Ductile Iron Gully Grating

DU143ME 450x450x100



Ductile iron gratings, suitable for use in areas where cars and lorries have access, including carriageways, hard shoulders and pedestrian zones. Capable of withstanding a 400kN (40 tonnes) test load.

FreeFlow™
D400



PRODUCT CODE	DU143 ME	BASE SIZE	540mm x 600mm
CLEAR OPENING	450mm x 450mm	DEPTH	100mm
		WEIGHT	47kg

FEATURES



KITEMARK

Exceeds the requirements of BS EN124-2:2015, tested and certified by BSI.



THREE POINT SUSPENSION

Three point suspension for non-rock stability.



RATIO

Ductile iron for improved weight to strength ratio.



COATING

Black coated finish.



STRONG & DURABLE

Spheroidal graphite cast iron according to EN 1563:2018, as per the requirements of BS EN124-2:2015.



WATERFLOW

Designed and engineered for Group 3 & 4 areas with high rainfall. Providing a waterway allowing for increased water flow.



DEPTH OF INSERTION

Meets the depth of insertion requirements of BS EN124-2:2015, CD534 and BS7903.



RECYCLABLE

Long life asset with high circularity contributing to the reduction in carbon footprint.

DU143ME

D400 (Group 4)

Ductile Iron Gully Grating

DU143ME 450x450x100



Ductile iron gratings, suitable for use in areas where cars and lorries have access, including carriageways, hard shoulders and pedestrian zones. Capable of withstanding a 400kN (40 tonnes) test load.

FreeFlow™
D400

DATA

Dimensions

A / Base Size: 540mm x 600mm

B / Clear Opening: 450mm x 450mm

C / Depth: 100mm

Materials

Ductile Iron

Finish

Black Coated

Certification

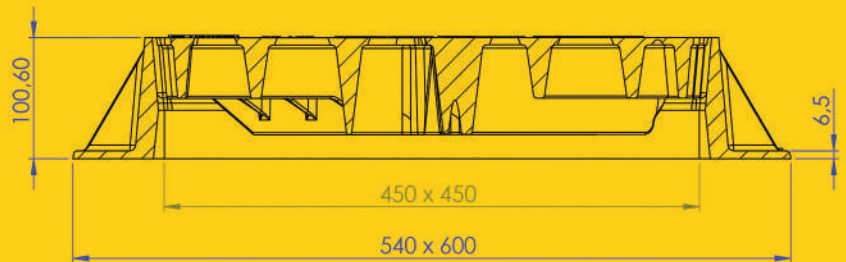
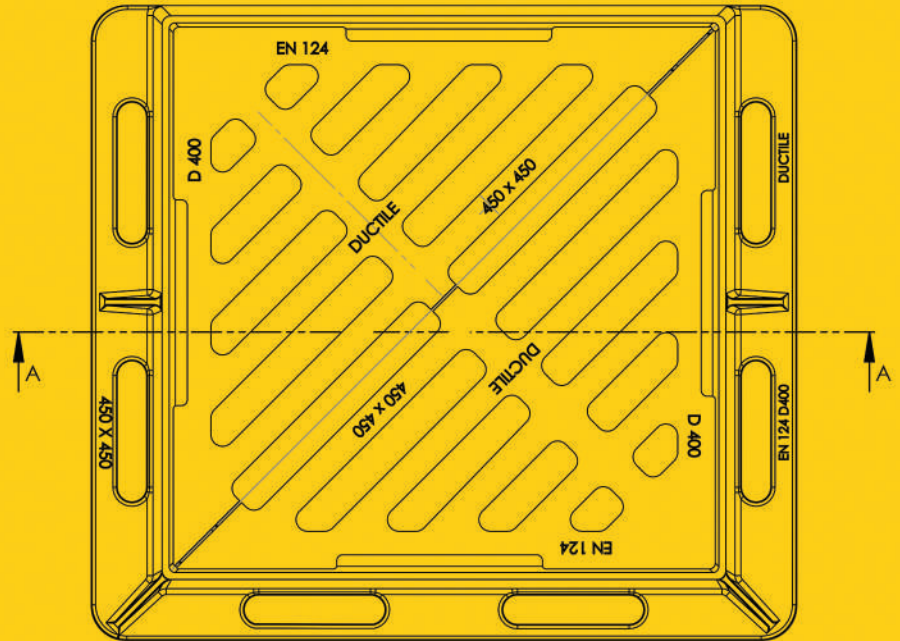
BSI Kitemark

Standard

EN124-2:2015

Product Type

Ductile Iron Gully Grating



- A** BASE SIZE
- B** CLEAR OPENING
- C** FRAME DEPTH

DIAGRAM KEY

Disclaimer: Eccles (UK Foundries FE) Ltd are continually seeking to improve our products and we therefore reserve the right to alter product specifications without prior notice. It is the responsibility of all users to ensure that the above product data is current. Installation details are available on request. It is always recommended that the use of road plates be used where access covers, gully grates and frames are exposed to construction and site traffic during the construction phase of any project and in accordance with "Annex F" EN124-1:2015.

eccles®
Intelligent Access & Drainage Solutions™

+44 (0)1922 613 222
enquiries@ecclesproducts.com
www.ecclesproducts.com

Eccles (UK Foundries FE) Limited
Portland Street, Walsall,
West Midlands, WS2 8AA, UK

